



September 2017 Newsletter

Connect with us



Grandparents Day Celebration Sunday, September 10

Make it a Sunday to remember with your family and grandparents!

In recognition of National Grandparents Day, join us on Sunday, September 10 for a **FREE** celebration to honor grandparents and their families!

Place: Historic St. Andrew's Church - 317 A. Philip Randolph Blvd. (near Veteran's Arena)

Time: Noon to 4 pm

Come and enjoy:

- Live, local entertainment
- Giant yard games

Thank you to our wonderful
Grandparents Day sponsors!



SWISHER INTERNATIONAL, INC.



JACKSONVILLE, FLORIDA



- Food trucks
- Activities from the First Coast YMCA
- Reading corner from the Jacksonville Public Library

ElderSource appreciates our sponsors: Swisher International, WJCT Public Broadcasting, The Bailey Group, WellCare, Sunshine Health, and Tom Bush Motors.

We look forward to seeing you and your family come out to enjoy an afternoon of fun!

SHINE Program at Risk for Cuts



Dear All,

Perhaps you are aware of or know someone who has been assisted by the SHINE (Serving the Health Insurance Needs of Elders) Program. This program is also known as SHIP (State Health Insurance Assistance Program) at the federal level. This program helps Medicare beneficiaries understand the complexities of their Medicare coverage and, in turn, helps them make informed decisions on things such as which Medicare Part D or prescription plan would best fit their needs. Just choosing the most appropriate plan can result in thousands of dollars of cost savings to the individual. SHINE/SHIP IS THE ONLY FREE, NON-BIASED service of this type offered to seniors.

Federal lawmakers are threatening to defund this critical program. We are asking all our friends to contact their members of Congress asking them to continue funding this valuable and cost effective program at its current levels.

Below is a listing of the members of Congress for our area where you can email via their website, call them and/or write them letters.

On behalf of the older adults and adults with disabilities in northeast Florida, thank you so much for your support.

Warm regards,

Linda J. Levin, M.S.G.
Executive Director

Contact Your Senators and Congressmen Today!
Click here for a complete list.

Jacksonville Area Community Assessment Project

Please consider completing this survey

What:

The Jacksonville Area Community Assessment Project is a survey of lesbian, gay, bisexual, transgender, and intersex (LGBTI) adults 18 and up who live, work, pray, play or use services in Jacksonville. Adults who don't identify as LGBTI, but who have same-gender partners or who have a different gender identity from their assigned sex at birth are warmly invited to participate!

**Why:**

To learn more about our local LGBTI community, and to help local service organizations and policy-makers better serve our diverse community. Results will be published in the spring of 2018 and a free, downloadable report will be made widely available through service organizations in Jacksonville.

Who:

The LGBT Community Fund for Northeast Florida, with the support of researchers at The Williams Institute at the UCLA School of Law, and guidance from a local advisory board of community members, is conducting this project.

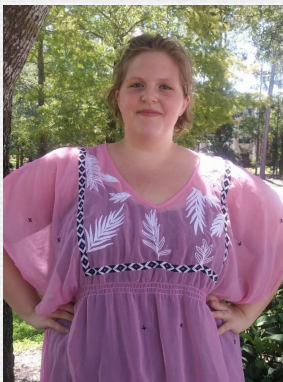
How:

The anonymous survey can be completed on-line neflcommunity.com. This is a secure website hosted at UCLA for research studies. The survey takes about 20 minutes to complete. Paper surveys and stamped envelopes can be picked up at the offices of JASMYN (923 Peninsular Pl, Jacksonville, FL) or ElderSource (10688 Old St. Augustine Rd, Jacksonville, FL) and mailed to the research team at UCLA address listed below.

Questions and to mail the printed survey:

Kerith Conron, ScD, MPH-Principal Investigator
Research Director,
The Williams Institute UCLA School of Law
[\(310\) 794-6193](tel:3107946193)
conron@law.ucla.edu

July Employee of The Month



Congratulations to our July Employee of the Month, Haley Wigley, Customer Service Specialist on our Aging and Disability Resource Center HelpLine. Haley was chosen for displaying a "can do" attitude and going above and beyond her duties since being hired in April 2017. She has displayed characteristics of a true team player. Congratulations Haley!

Shop Amazon Smile. Give Back to ElderSource.

Did you know that when you shop Amazon Smile, a percent of your purchase can be donated to

ElderSource?



When you sign-up for Amazon Smile, you can designate which charity you wish to donate to. For every purchase that you make through Amazon Smile, 0.5% of your purchase can be donated to the charity of your choice. For your next purchase we hope you'll consider ElderSource. All proceeds help us to further our mission to provide quality programs and services for seniors, caregivers and adults with disabilities in the community.

[Shop now and give back!](#)

Providing Helpful Tools to the Community

As an agency, we aim to provide useful and educational tools to the community through various trainings we offer with ElderSource Institute. One of the recent trainings included an Age Sensitivity training on August 30th.



During the training, participants experienced sensory changes associated with aging through simulation. The training also provided participants with valuable tools and information for working and interacting with older adults.

"A training like this, helps me to better relate to the clients I serve," said attendee, Pamela Dry, Community Liaison for VITAS. As the Community Liaison, Dry works with many seniors and their families in the community. She is featured in the photo above during the training taking a look through glasses simulating the visual conditions of glaucoma.

[For more information on trainings available through ElderSource Institute, click here](#)

Save the Date for Northeast Florida Senior Events



Age Sensitivity Training

Date: Thursday, Sept. 14, 2017



Missing Pieces Training

Date: Wednesday, Oct. 18, 2017

Time: Noon - 1:30 pm

Location: ElderSource
10688 Old St. Augustine Rd.

Cost: \$15 for the course; additional cost for 2 CEUs is \$20.

The ElderSource Institute Age Sensitivity Training is an interactive training program for individuals who are interested in learning about the specific needs and challenges of older adults in the community. During this workshop, participants will experience sensory changes associated with aging through simulation. Age Sensitivity training will provide participants with valuable tools and information for working and interacting with older adults.

[Click here to register today!](#)

Time: Noon - 1:30pm

Location: ElderSource
10688 Old St. Augustine Rd.

Cost: \$20

This critical training on end-of-life planning will be facilitated in-person by developer Jody Giles. This is a 1.5 hour interactive and informative training designed for professionals, caregivers and individuals who care about their own aging. Jody will cover important topics including:

- Wills
- Power of Attorney
- Advance Directives
- Letter of Instruction
- Long-term care Insurance
- Life Insurance

[Click here to register today!](#)



CARING FOR THE MILITARY/VETERAN CAREGIVER:
A FAMILY CAREGIVING CONFERENCE

FRIDAY, SEPT. 22, 2017

Hosted by:

 Community Hospice & Palliative Care

 COMMUNITY HOSPICE VETERANS PARTNERSHIP

 CAREGIVER COALITION OF NORTHEAST FLORIDA
A member of Community Hospice & Palliative Care

Presented by:  AARP Real Possibilities Jacksonville

Caring for the Military Veteran Caregiver

Date: Friday, September 22, 2017

Time: 9am-3pm , registration begins at 8:30am

Location: WJCT | 100 Festival Park

- Journey of the Military Caregiver: Your Own Battle
- Vietnam Veterans: Untold Stories at the End of Life
- Caregiving & Intimacy
- Preservation of Assets
- and MORE!

This event is hosted by Community Hospice and The Caregiver Coalition of Northeast Florida of which ElderSource is a member.

[Click here for more information](#)

ElderSource values all people – including but not limited to all nationalities, socio-economic backgrounds, abilities, races, genders, religious perspectives, sexual orientations and gender identities – in everything we do. We welcome the unique insights and perspectives of all persons in our quest to fulfill our mission.

myeldersource.org | info@myeldersource.org | 904-391-6600

[Visit our website](#)